

# **CSO V2 2014**

**Super-V2 Flexible Chassis**  
**1/10 Electric Touring Car**

Some tips & tricks  
provided by MiniZRacing  
team drivers to get  
an optimal assembly  
of your CSO V2 2014



*Enjoy Building and Driving you CSO V2!*

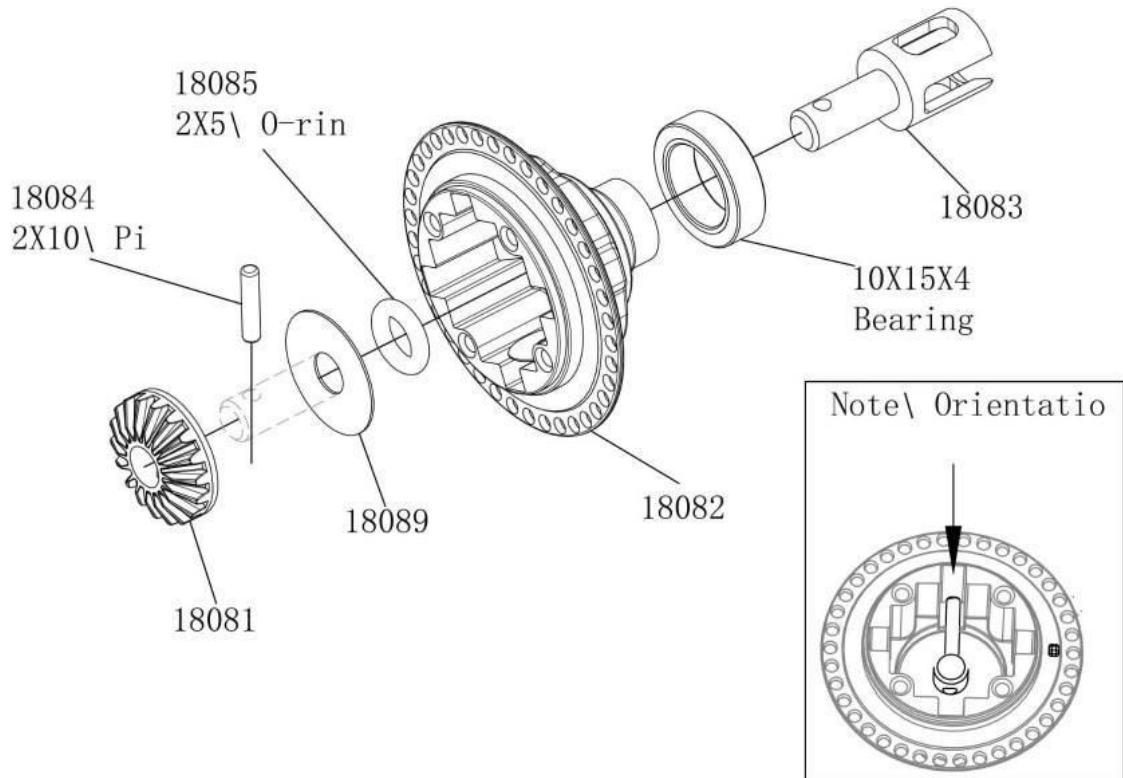
**Team CSO R/C Racing Product**

&

**MINIZ RACING**

## How to improve differential slip

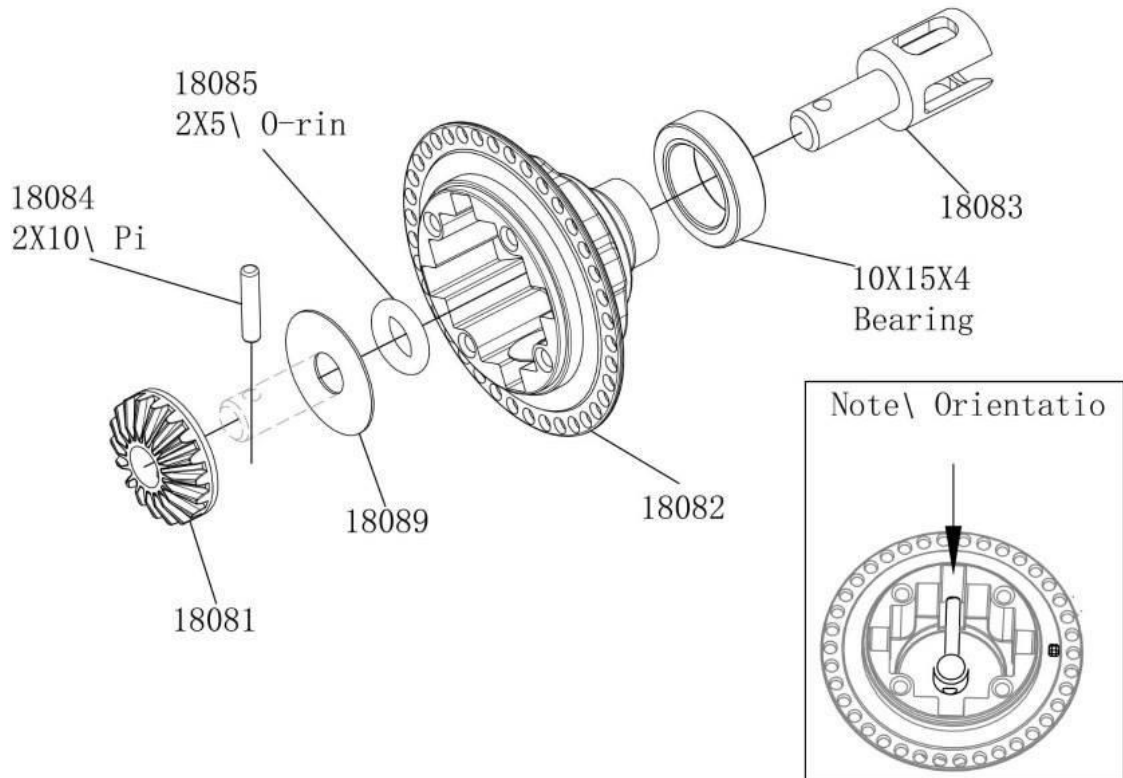
### 2. Gear\ Differential



In order to have a smoother and sliding differential is suggested to replace washers in the differential coded by CSO-18089 5x15 0.4mm thickness, with 5x15 washers 0.2 thickness or less.

## Differential-pulley alignment

### 2. Gear\ Differentia



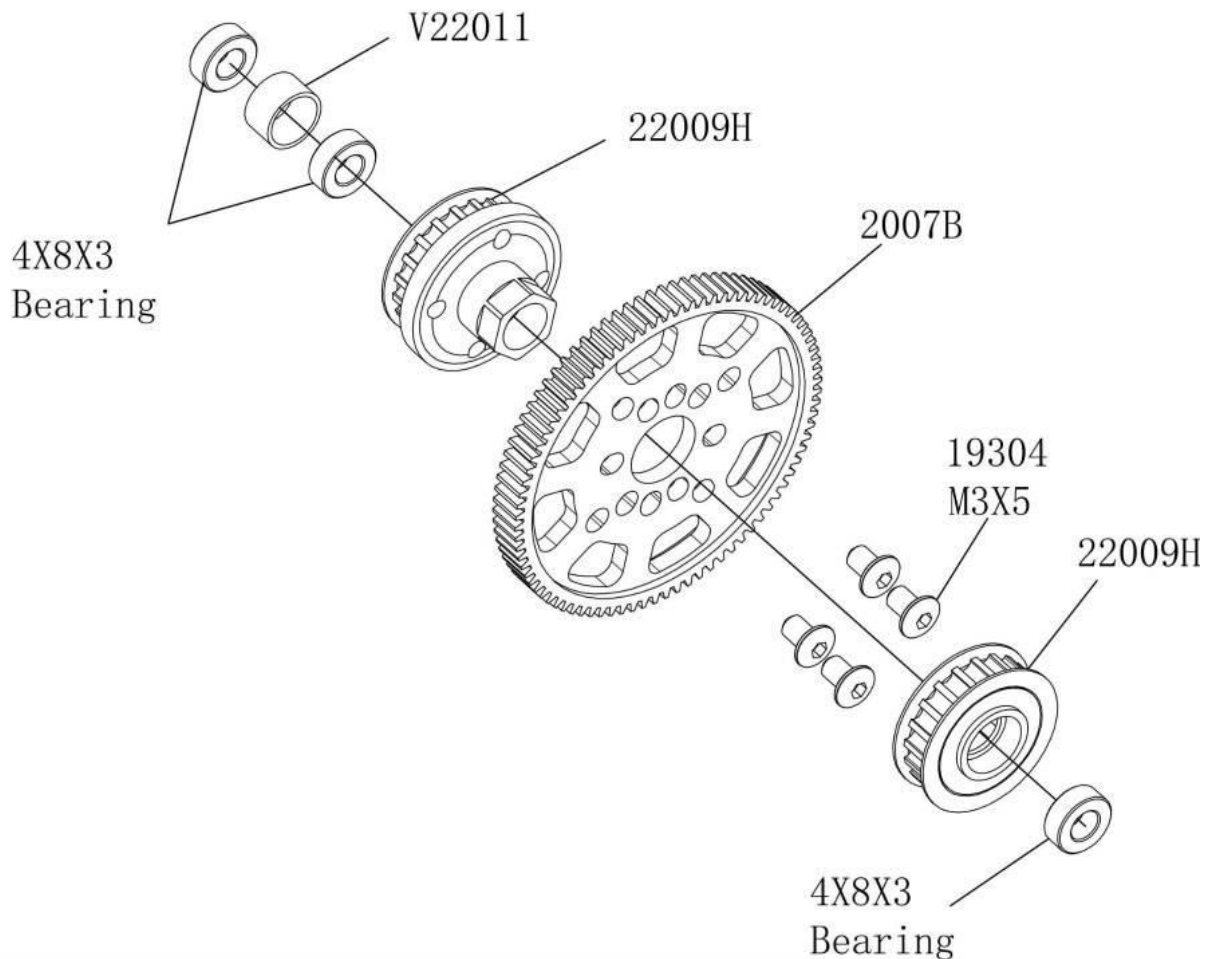
For an optimal alignment between the differential and the pulley is sometimes necessary to use shims (12x10x0.2) to move the differential on the right / left.

it is necessary to make the belt working as more outside as possible, or move the differential to the left (looking at the car from the rear).

The shims are placed between the differential cover coded (CSO-18082) and the bearing (10x15x4), it is suggested to use one / two 12x10 0.2mm shim, not included in the Kit.

## Differential-pulley alignment

### 9. Center\ Gear\ Adapt



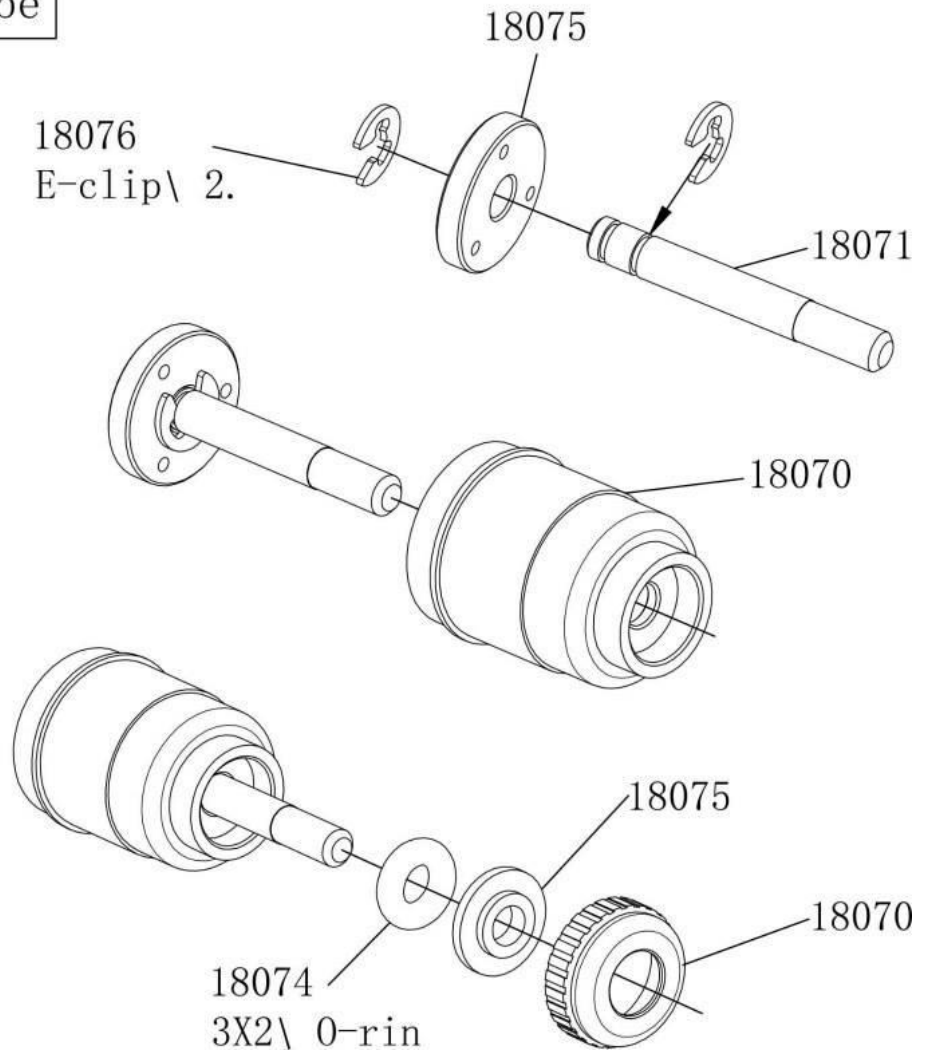
For an optimal alignment between the pulley and the differential is sometimes necessary to use shims (5x10x0.2mm) to move the pulley on the right / left.

it is necessary to make the belt working as more inside as possible, that means to move the pulley assembly to the right as more as possible (looking at the car from the rear).

The shims are placed between the outer bearing 4x8x3mm and one of the two pulleys (CSO code-22009H) see in this picture. It is suggested to use one / two 5x7x0.2mm shims, not included in the Kit.

## Efficient Shocks

### 34. Shock\ Absorbe

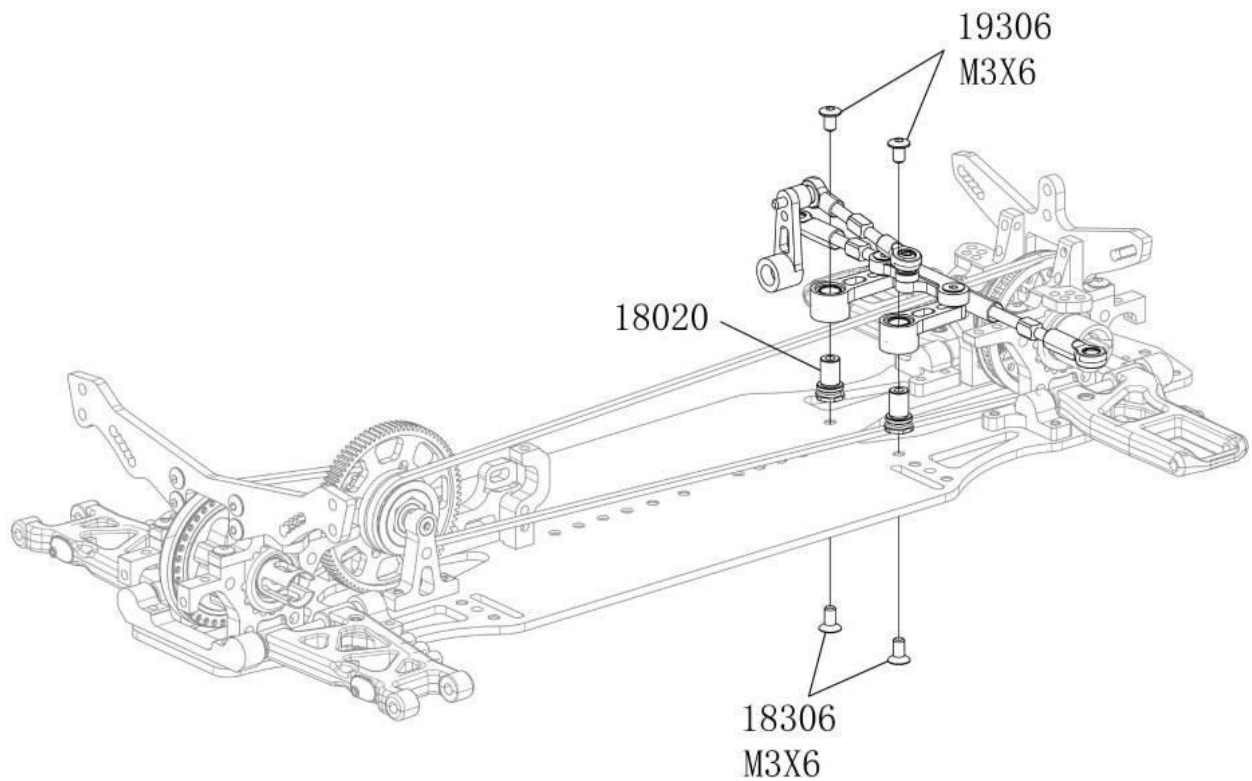


To make shock absorbers work best, it is recommended that to use 3.2x5x0.2mm shims between the O-Ring (CSO-18074) and the stem plastic washer (CSO-18075).

It is recommended to use two 3.2x5x0.2mm shims, not included in the Kit.

## Steering without play

### 21. Steering\ Syste



To eliminate vertical play on the postponement of the steering insert a 5x7x0.2mm shim, not included in the kit, between the studs (part number 18020-CSO) and the reference steering (CSO code-18019).

Team Miniz racing!

